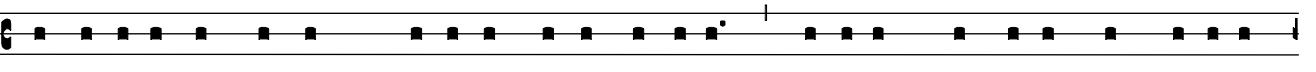
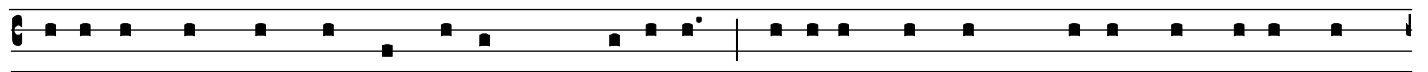



Epistle for the Feast of St. Matthew

L 
Ecti-o Ezechi-é-lis Prophétæ.

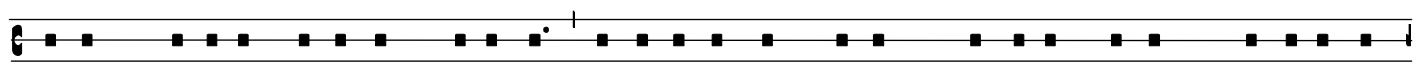
S 
imi-litúdo vultus quátu-or animá-li-um: fáci-es hóminis, et fáci-es



le-ónis a dextris ipsórum quátu-or: fáci-es autem bovis a sinístris



ipsórum quátu-or, et fáci-es áquilæ désuper ipsórum quátu-or. Fáci-es


e-órum, et pennæ e-órum exténte désuper: du-æ pennæ singulórum


jungebántur, et du-æ tegébant córpora e-órum: et unumquódque e-órum


coram fáci-e su-a ambulábat: ubi erat ímpetus spí-ritus, illuc gradi-ebán-


tur, nec revertébántur cum ambulá-rent. Et simi-litúdo animá-li-um,

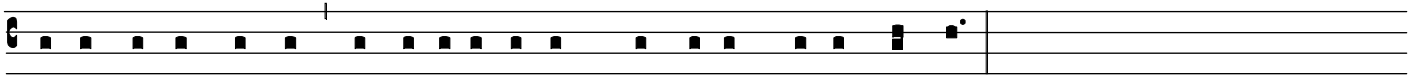

aspéctus e-órum quasi carbónum ignis ardénti-um, et quasi aspéctus



lampadá-rum. Hæc erat ví-si-o discúrrens in médi-o animá-li-um,



splendor ignis, et de igne fulgur egrédi-ens. Et animá-li-a ibant, et



revertebántur in simi-litúdinem fúlguris coruscántis.